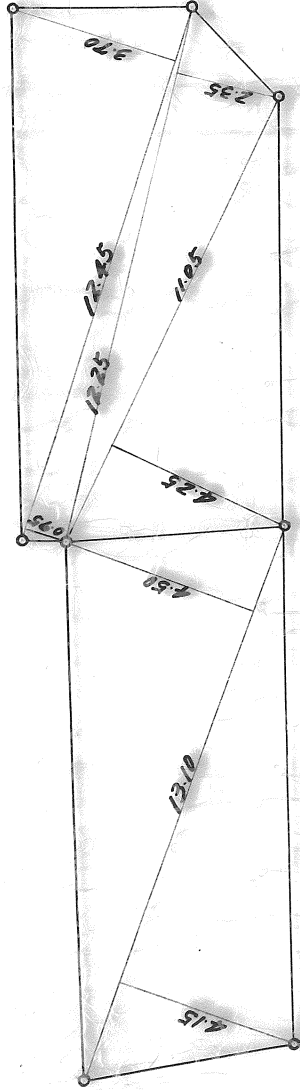


若松駅前土地区画整理事業
確定図

13/14

$$\begin{aligned} 1245(3.70+0.95) &= 578925 \\ 1225 \times 2.35 &= 287075 \\ 1105 \times 4.25 &= 469625 \\ \text{計 } 133.1425 & \\ &= \text{除 } 66.82 \text{ 坪} \end{aligned}$$



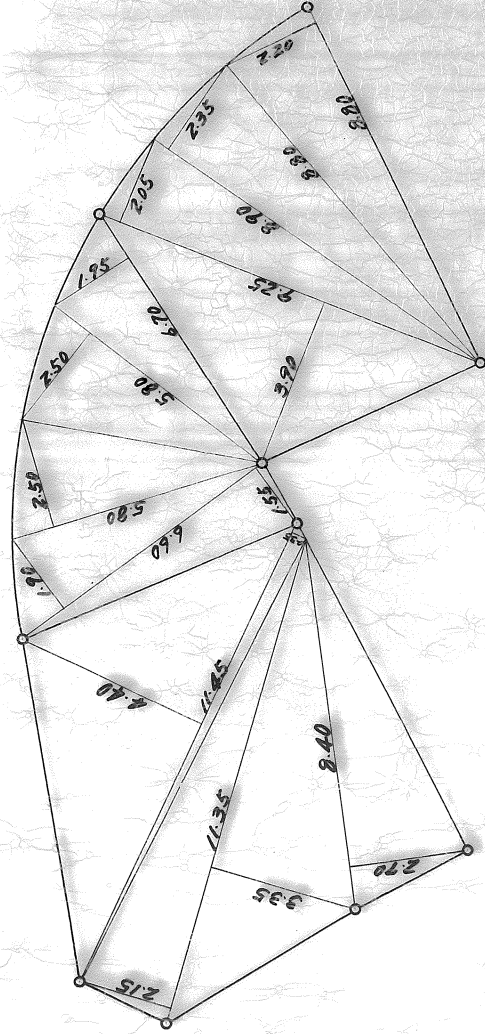
$$\begin{aligned} 13.10(4.50+4.15) &= 113.315 \\ \text{計 } 113.315 & \\ &= \text{除 } 56.65 \end{aligned}$$

$$\begin{aligned} 11.45(4.40+0.35) &= 54.3875 \\ 11.15(7.15+3.35) &= 62.4250 \\ 8.40 \times 2.70 &= 22.6800 \\ \text{計 } 139.4925 & \\ &= \text{除 } 19.74 \text{ 坪} \end{aligned}$$

$$\begin{aligned} 11.90(2.70+3.35) &= 71.9 \\ 4.75 \times 0.75 &= 2.81 \\ \text{計 } 74.81 & \\ &= \text{除 } 37.41 \end{aligned}$$

$$\begin{aligned} 4.50(2.10+1.45) &= 15.97 \\ 3.80 \times 1.35 &= 5.13 \\ \text{計 } 21.105 & \\ &= \text{除 } 10.55 \end{aligned}$$

$$\begin{aligned} 6.70 \times 1.95 &= 13.065 \\ 5.80 \times 2.50 &= 14.500 \\ 5.80 \times 2.50 &= 14.500 \\ 6.60(1.55+1.90) &= 22.770 \\ \text{計 } 64.835 & \\ &= \text{除 } 32.41 \end{aligned}$$



$$\begin{aligned} 9.25(3.90+2.05) &= 55.0375 \\ 8.90 \times 2.35 &= 20.9150 \\ 8.80 \times 2.20 &= 19.360 \\ \text{計 } 95.3125 & \\ &= \text{除 } 47.65 \text{ 坪} \end{aligned}$$

